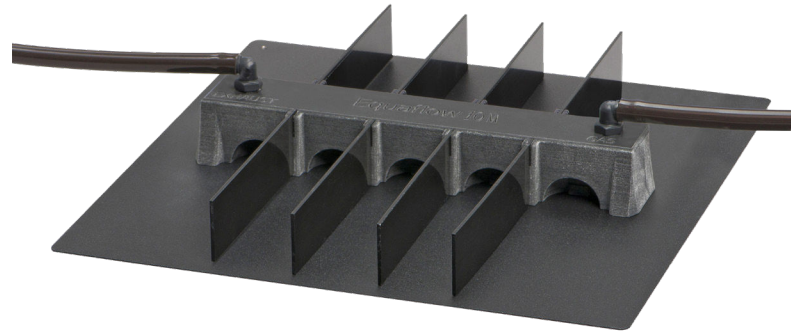




SOMNI

SCIENTIFIC

RODENT ANESTHESIA MANIFOLDS*



EQUAFLOW 10M



SAFETY:

- Meets NIOSH standards for waste gas safety, when used properly.
- Hyper branched active scavenging to each nose cone assuring compliance and user safety.
- Hyper branched equal gas delivery to each nose cone prevents animal awakening.
- Animals lay in a flat, natural position during anesthesia (no head torqueing).

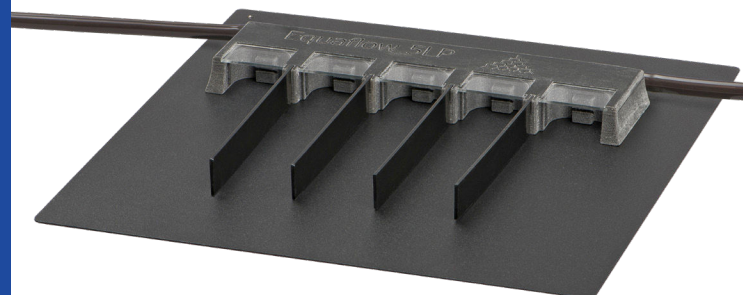


FEATURES:

- Optical imaging compatible (from above or below).
- Non-auto fluorescent/luminescent material.
- Effective design allows for lower flow rates and less usage of anesthetic agent.
- Available in 3 I (125mm FOV), 3XL, 5, 5LP 10 (200mm FOV) and 10XL (250mm FOV) port configurations.
- Integrated magnets assuring consistent manifold and mouse placement on base plate.
- Single port designs for mice and rats.
- Includes Manifold, dividers, magnetic positioners for animals, tubing and black base plate.



EQUAFLOW 3I



EQUAFLOW 5LP



1-877-637-3625 | info@somniscientific.com

www.somniscientific.com

Proudly machined, assembled, and calibrated in the USA