

**SOMNI**  
SCIENTIFIC



**UNIFLOW / MINIFLOW  
SINGLE MOUSE / SMALL RAT  
EQUAFLOW NOSE CONE**

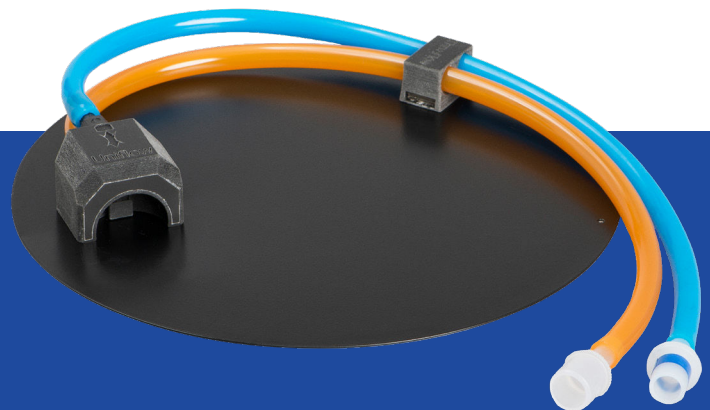
**Miniflow Single Mouse/  
Small Rat Equaflow Nose Cone**

The Single Mouse/Rat Equaflow Nose Cones provide state of the art anesthesia delivery to a subject.

The Equaflow Nose Cone has built in scavenging holes that work with Somni Scientific's EPS-3 or an attenuated in house vacuum system. This safeguards researchers and technicians so they are not subject to noxious, gaseous anesthesia during procedures, keeping users compliant with NIOSH exposure limits.

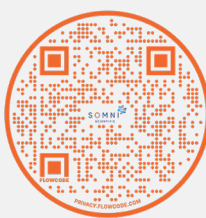
The Equaflow Nose Cones have built in magnetic capability therefore no tape is needed to keep the device in place. The design of the device allows for scavenging of waste gas even if there is no subject utilizing the Nose Cone.

The efficiency of the Equaflow Nose Cones allow for users to use lower flow rates providing cost savings of anesthetic agent and oxygen.



**SAFETY:**

- Meets NIOSH standards for waste gas safety, when used properly.
- Hyper branched active scavenging to each nose cone assuring compliance and user safety.
- Hyper branched equal gas delivery to each nose cone prevents animal awakening.
- Animals lay in a flat, natural position during anesthesia (no head torquing).



1-877-637-3625 | info@somniscientific.com | www.somniscientific.com

Proudly machined, assembled, and calibrated in the USA